

# 1

# SX

**Stainless Steel and Mild Steel Enclosures**

SX Range

1

BPG Range

2

BPGA Range

3

ZAG Range

4

High Voltage

5

Fire Rated

6

ZP Range

7

Specials

8

Technical

9

## Stainless Steel and Mild Steel Enclosures

1

SX Range

The SX range comprises 14 sizes of enclosure manufactured in either mild steel or stainless steel. 11 sizes are available in depths of 140 or 200mm and 8 sizes are available in depths of 140, 200 or 300mm. The majority of the range can be fitted with removable gland plates on any or all of the four sides. The mild steel version (MSX) is available with a number of paint options (most RAL colours are available) and anti-corrosion finishes. Further advice on surface finishes can be sought from the ABTECH sales office.



The stainless steel range (SSX) is manufactured in 316 grade stainless steel to give the maximum environmental protection. The main body is manufactured from 2mm thick sheet and the mounting straps and gland plates from 3mm thick plate. Cable entries can be drilled in the enclosure door or sides or through the gland plates, if fitted. Entries may also be drilled through the rear face of the enclosure (EEx'e' versions also.)

Another important feature of the SX range is the hinged, lift-off door, which is held to the enclosure by at least 4 captive stainless steel screws, which also maintain the correct compression on the gasket. The hinges are solid block, machined oversize to enable the screws to control the closing of the door, not the hinge, its only function being to support the door when opened. The hinges allow easy removal of the door with only minimal opening required before removal (less than 10°).

Earthing is accomplished by means of an Internal / external earth stud fitted as standard which can be connected to the terminal mounting rail or component mounting plate. Optionally, earth studs can be fitted to the door and gland plates. Rail mounted earth terminals or proprietary earth bars can be fitted inside the enclosure and ABTECH Sales staff will be happy to advise on this. When fitted with a standard neoprene gasket, the enclosure is suitable for ambient temperatures of - 40°C to + 80°C. Alternatively, when fitted with an optional silicone gasket the temperature range is increased to - 70°C to + 130°C.

The SX range of enclosures are suitable for use in hazardous areas and can be supplied with a number of certificates. ATEX EEx'e' to BS EN 50019 (Zone 1 & 2) EEx'nA' to BS EN50021 (Zone 2) and NEMA 4X (CSA, UL & FM class 1, div 2) and GOST.



The SX range can be supplied fitted with any component approved terminal to apparatus level or can be supplied empty as component approved for the clients own certification requirements.

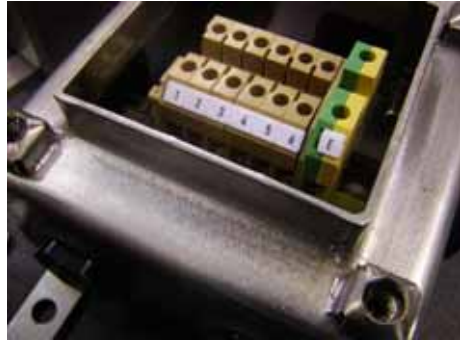
The SX range was specifically designed to meet the rigours of the North Sea environment and is capable of achieving IP66 and IP67. It has also undergone and passed the Shell/ERA deluge test which was devised to adequately test enclosures and electrical equipment which is routinely subjected to ships deck conditions or fire deluge systems.

IP68 enclosures are also available for depths up to 120 ft to special order. Further information on submersible enclosures is available in Section 8 of this catalogue.



The SX range has many features which lend itself to a wide variety applications, not least of which is the ability to be constructed to almost any dimension due to its fabricated nature. This can also be applied to EEx'e' enclosures where the certification allows oversize enclosures to be manufactured whilst retaining the next smallest sized enclosure's power rating.

The SX range is also suitable for fire resistance applications and when fitted with ceramic terminals meets the requirements of IEC 331 (750°C for 3 hours) and also BS6387/1983 (950°C for 3 hours). Further details are available in Section 6 of this catalogue.



Other applications include junction boxes, both industrial and hazardous area, OEM applications, fire protection systems, tunnel wiring, IP68 applications, etc.

#### SX Range Features

- Wide Operating Temperature (- 70°C to + 130°C)
- Ingress Protection up to IP68
- Fire Resistant to IEC331
- Impact Resistant > 10 Nm
- Corrosion Resistant
- Gland plates can be fitted to any or all four sides (size SX0 and above)
- Certification for use in Zone 1 and 2
- UL, CSA, ATEX and GOST Approvals
- Ideal for Petrochemical and Marine applications

SX Range

1

BPG Range

2

BPGA Range

3

ZAG Range

4

High Voltage

5

Fire Rated

6

ZP Range

7

Specials

8

Technical

9

## Accessories and Options

The following table is a list of the available accessories suitable for particular standard sizes of SX enclosures. Care should be taken when ordering accessories for use with enclosures intended for hazardous areas to ensure that compliance with certification is retained.

Part Number (see note 1)	Width (mm) (see note 2)	Height (mm) (see note 2)	Depth (mm) (see note 2)	140mm Depth	200mm Depth	300mm Depth	Gland Plates (on any or all four sides)	EP – Electro-polished external surfaces (SX range only)	LB - Label Bracket Welded to Door	ES - Earth Stud fitted to Door and Gland Plates	EB - Internal Earthing Bar	SIL - Silicone Gasket (see note 3)	BD - Breather Drain (see note 4)	TP - Tamper Proof Lid Fixing Screws	MP - Component Mounting Plate (Steel /Stainless Steel)	RF – RFI Protection (see note 5)
SX45	114	114	51	✗	✗	✗	✗	✓	✓	✗	✗	✓	✓	✓	✓	✓
SX64	102	152	63	✗	✗	✗	✗	✓	✓	✗	✗	✓	✓	✓	✓	✓
SX66	152	152	102	✗	✗	✗	✓	✓	✓	✓	✓	✓	✓	✓	✓	✓
SX0	152	229	-	✓	✓	✗	✓	✓	✓	✓	✓	✓	✓	✓	✓	✓
SX0.5	184	274	-	✓	✓	✗	✓	✓	✓	✓	✓	✓	✓	✓	✓	✓
SX1	234	324	-	✓	✓	✗	✓	✓	✓	✓	✓	✓	✓	✓	✓	✓
SX1.5	306	306	-	✓	✓	✓	✓	✓	✓	✓	✓	✓	✓	✓	✓	✓
SX2	372	324	-	✓	✓	✓	✓	✓	✓	✓	✓	✓	✓	✓	✓	✓
SX3	372	448	-	✓	✓	✓	✓	✓	✓	✓	✓	✓	✓	✓	✓	✓
SX4	372	510	-	✓	✓	✓	✓	✓	✓	✓	✓	✓	✓	✓	✓	✓
SX5	510	510	-	✓	✓	✓	✓	✓	✓	✓	✓	✓	✓	✓	✓	✓
SX6	510	780	-	✓	✓	✓	✓	✓	✓	✓	✓	✓	✓	✓	✓	✓
SX7	650	950	-	✓	✓	✓	✓	✓	✓	✓	✓	✓	✓	✓	✓	✓
SX8	800	1250	-	✓	✓	✓	✓	✓	✓	✓	✓	✓	✓	✓	✓	✓

Ordering Example;

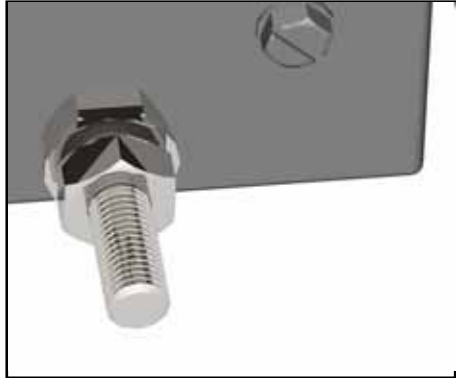
**SX1.5 300 4GP LB EB**

(Stainless Steel SX1.5 300mm deep, 4 gland plates, label bracket on door and internal earthing bar)

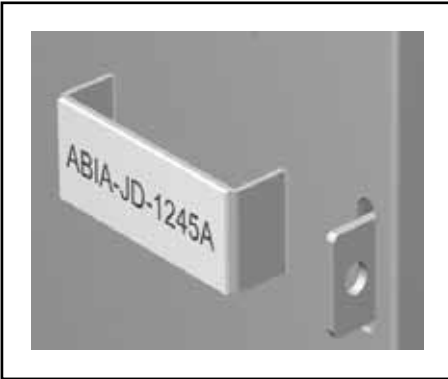
1. The range is available either in stainless steel 316 (SX variants) or mild steel (MSX variants).
2. Manufacturing tolerances are +/- 3mm on overall dimensions and +/-0.5mm on fixing hole centres.
3. Silicone gasket increases temperature rating (-70° to +130° C) and may increase working life in some applications.
4. Breather drain available in IP66 stainless steel or plastic.
5. Radio Frequency Interference (RFI) gasket may reduce IP rating.



Full width, full height Gland Plates  
(can be fitted to any or all sides)



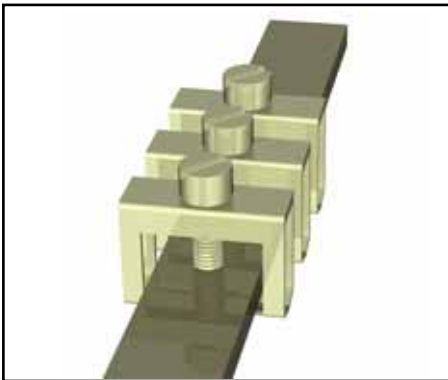
Earth Stud fitted to door and gland plates



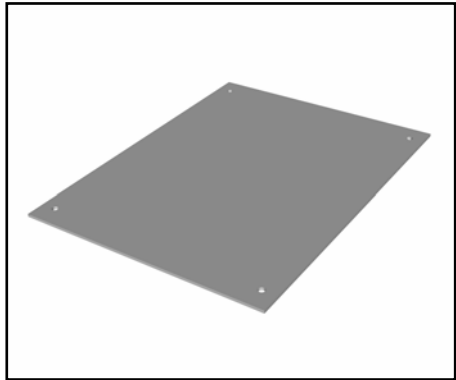
Label Bracket  
(welded to door)



Electro-polished  
(external surfaces on SX range only)



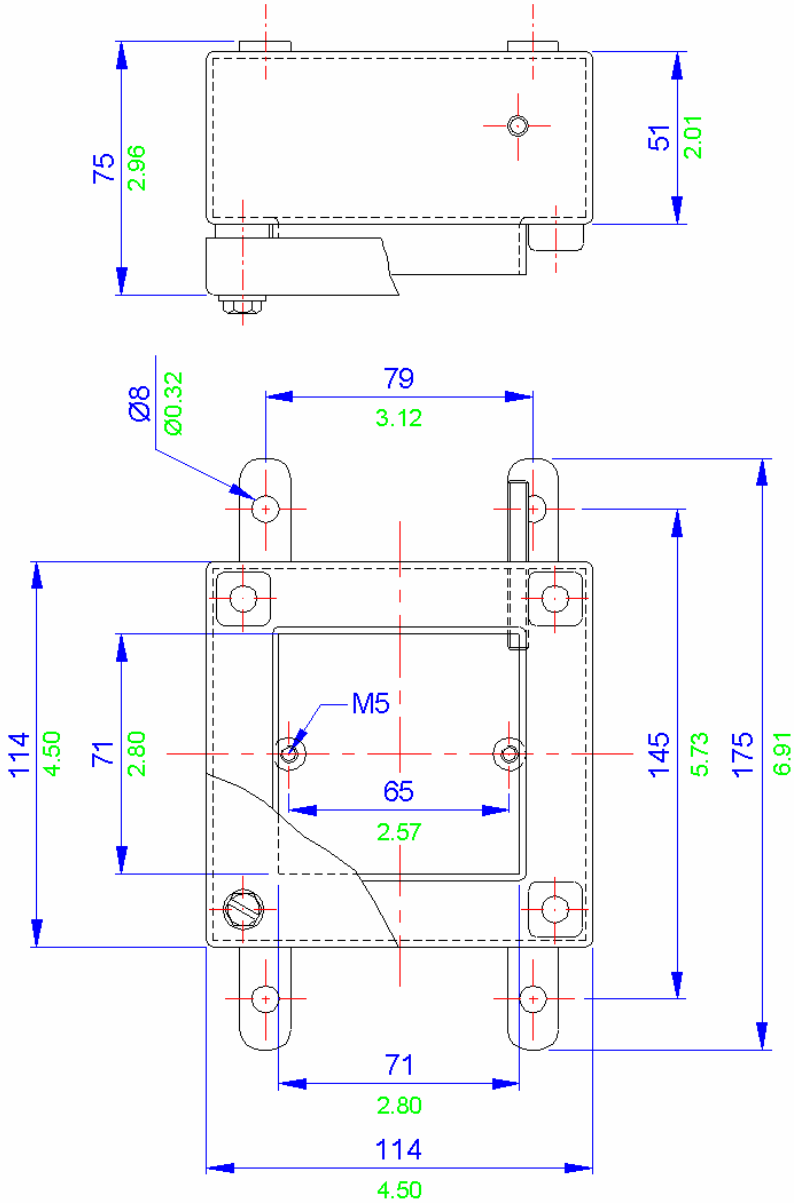
Internal Earthing bar  
(can be fitted with clamps)



Component Mounting Plate  
(steel or stainless steel 316)

SX Range	1
BPG Range	2
BPGA Range	3
ZAG Range	4
High Voltage	5
Fire Rated	6
ZP Range	7
Specials	8
Technical	9

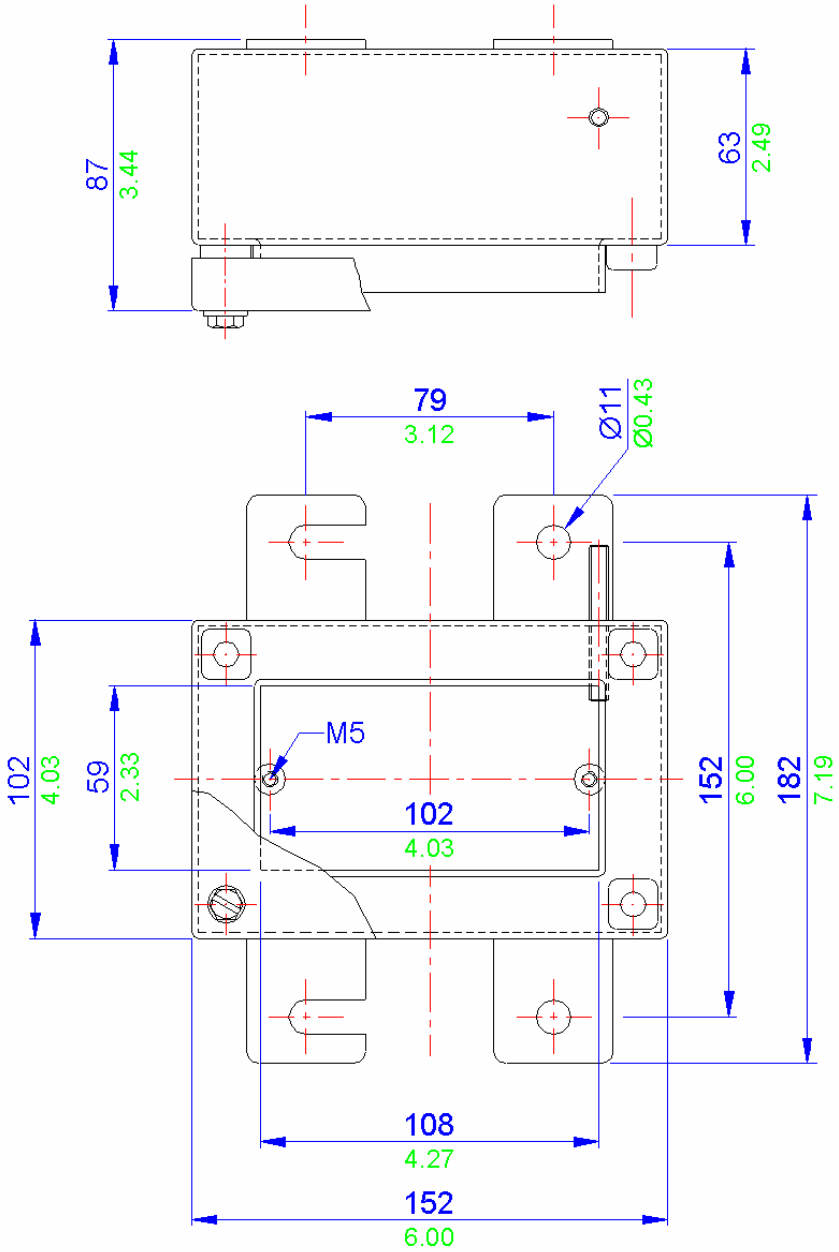
MSX 45 / SSX 45 Drawing



All blue dimensions in mm, all green dimensions in decimal inches (drawing not to scale)



MSX 64 / SSX 64 Drawing

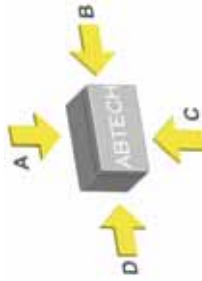


All blue dimensions in mm, all green dimensions in decimal inches (drawing not to scale)

MSX 64 / SSX 64 Specifications	
Width	102mm
Length	152mm
Depth	63mm
Material	Mild steel Stainless steel 316 (1,4404)
Weight	1500g
IP Rating	66 or 67
Temperature	-40° to 80° C (standard neoprene gasket) -70° to 130° C (silicone gasket)
Certification	ATEX EEx e (Zone 1 & Zone 2) BS EN 60079-7
	ATEX EEx nA (Zone 2) BS EN 60079-15
	ATEX EEx nR (Zone 2) BS EN 60079-15
	CSA - Ex e (Class 1 Zone 1 & Zone 2) FM - AEx e (Class 1 Zone 1 & Zone 2)
Power Rating	GOST-R Ex e (Zone 1 & Zone 2)
	NEMA 4X (CSA, UL & FM) (class 1 division 2) 10.258W

Terminal Populations		
Maximum Number of Rows	1	
	Weidmuller	Wago
	SAK 2.5	15 280-992
	SAK 4	15 280-999
	SAK 6	11 281-691
	SAK 10 *	9 281-992
	SAK 16 *	0 281-993
	SAK 35	0 282-691
	SAK 70	0 284-691
		283-691
		285-691
		280-998
		281-998
		264-120
	Phoenix	264-220
	UK 2.5 N	17 264-132 (2)
	UK 3 N	17 264-134 (4)
	UK 5 N	15 262-132 (2)
	UK 10 N *	9 262-134 (4)
	UK 16 N *	7
	UK 35 N	0
* Care must be taken to ensure that the size of this enclosure can accommodate the cable bending radius.		

Entry Matrix		
Entry Size	Side A-C	Side B-D
M16	6	8
M20	3	4
M25	2	3
M32	1	2
M40	0	0
Drilling Envelope		
Side A-C	102 x 63mm	
Side B-D	152 x 63mm	



Technical 9

Specials 8

ZP Range 7

Fire Rated 6

High Voltage 5

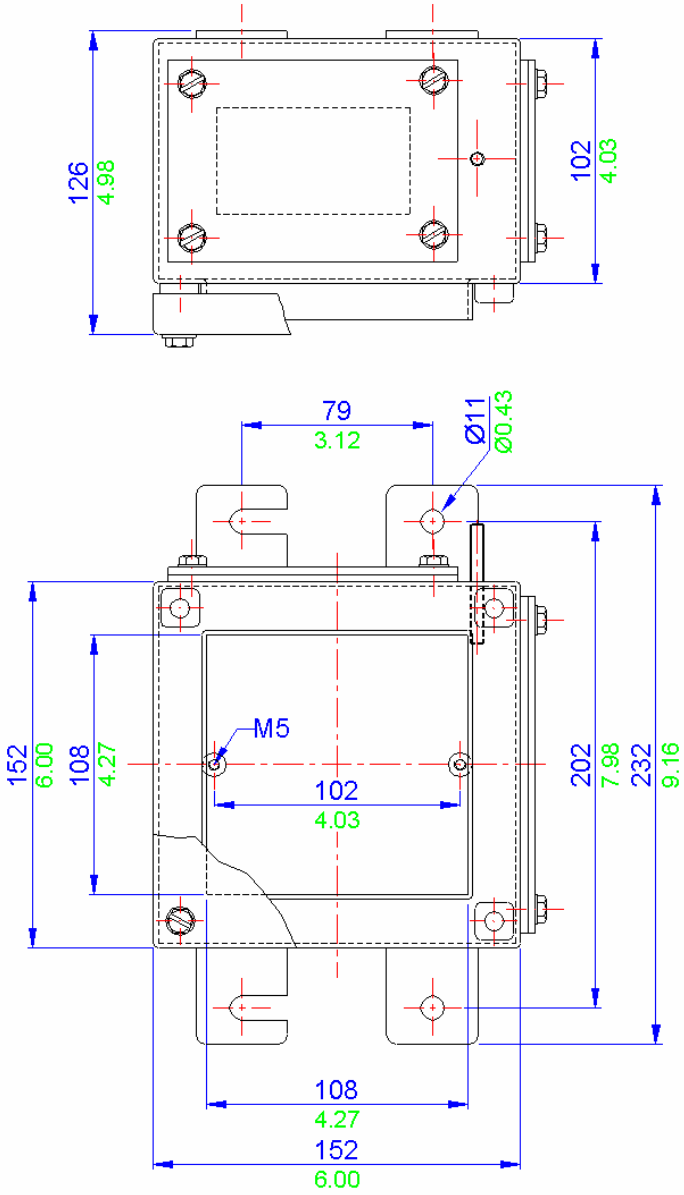
ZAG Range 4

BPGA Range 3

BPG Range 2

SX Range 1

MSX 66 / SSX 66 Drawing



All blue dimensions in mm, all green dimensions in decimal inches (drawing not to scale)

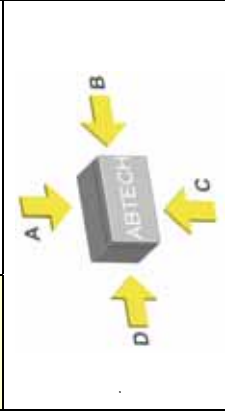
MSX 66 / SSX 66 Specifications	
Width	152mm
Length	152mm
Depth	102mm
Material	Mild steel Stainless steel 316 (1.4404)
Weight	2200g
IP Rating	66 or 67
Temperature	-40° to 80° C (standard neoprene gasket) -70° to 130° C (silicone gasket)
Certification	ATEX EEx e (Zone 1 & Zone 2) BS EN 60079-7 ATEX EEx nA (Zone 2) BS EN 60079-15 ATEX EEx nR (Zone 2) BS EN 60079-15 CSA - Ex e (Class 1 Zone 1 & Zone 2) FM - AEx e (Class 1 Zone 1 & Zone2) GOST-R Ex e (Zone 1 & Zone 2) NEMA 4X (CSA, UL & FM) (class 1 division 2) 14.287W
Power Rating	

Terminal Populations		
Maximum Number of Rows	1	
Weidmuller	Wago	
SAK 2.5	15	280-992
SAK 4	15	280-999
SAK 6	11	281-691
SAK 10 *	9	281-992
SAK 16 *	7	281-993
SAK 35 *	6	282-691
SAK 70	0	284-691
		283-691
		285-691
		280-998
		281-998
		264-120
		264-220
Phoenix		10
UK 2.5 N	17	264-132 (2)
UK 3 N	17	264-134 (4)
UK 5 N	14	262-132 (2)
UK 10 N *	9	262-134 (4)
UK 16 N *	7	
UK 35 N *	6	

\* Care must be taken to ensure that the size of this enclosure can accommodate the cable bending radius.

Entry Matrix		
Entry Size	Side A-C	Side B-D
M16	14	14
M20	8	8
M25	6	6
M32	3	3
M40	2	2

Drilling Envelope	
Side A-C	152 x 102mm
Side B-D	152 x 102mm



Technical	9
Specials	8
ZP Range	7
Fire Rated	6
High Voltage	5
ZAG Range	4
BPGA Range	3
BPG Range	2
SX Range	1



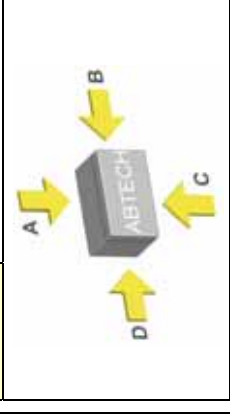
MSX 0 / SSX 0 Specifications	
Width	152mm
Length	229mm
Depth	140mm or 200mm
Material	Mild steel Stainless steel 316 (1.4404)
Weight	140mm deep 2200g 200mm deep 4000g
IP Rating	66 or 67
Temperature	-40° to 80° C (standard neoprene gasket) -70° to 130° C (silicone gasket)
Certification	ATEX EEx e (Zone 1 & Zone 2) BS EN 60079-7
	ATEX EEx nA (Zone 2) BS EN 60079-15
	ATEX EEx nR (Zone 2) BS EN 60079-15
	CSA - Ex e (Class 1 Zone 1 & Zone 2) FM - AEx e (Class 1 Zone 1 & Zone 2) GOST-R Ex e (Zone 1 & Zone 2)
Power Rating	NEMA 4X (CSA, UL & FM) (class 1 division 2) 19.874W

Terminal Populations		
Maximum Number of Rows	1	
Weidmuller	Wago	
SAK 2.5	21	24
SAK 4	19	24
SAK 6	16	20
SAK 10 *	12	20
SAK 16 *	10	20
SAK 35 *	7	15
SAK 70 *	5	12
		0
		0
		24
		20
		21
Phoenix	264-220	12
UK 2.5 N	25	264-132 (2)
UK 3 N	25	264-134 (4)
UK 5 N	21	262-132 (2)
UK 10 N *	12	262-134 (4)
UK 16 N *	10	
UK 35 N *	8	

\* Care must be taken to ensure that the size of this enclosure can accommodate the cable bending radius.

Entry Matrix		
Entry Size	Side A-C	Side B-D
M16	5	9
M20	3	6
M25	2	3
M32	1	2
M40	1	2

Drilling Envelope	
Side A-C	87 x 75mm (4 x gp 140)
Side B-D	144 x 75mm (4 x gp 140)



Technical	9
Specials	8
ZP Range	7
Fire Rated	6
High Voltage	5
ZAG Range	4
BPGA Range	3
BPG Range	2
SX Range	1



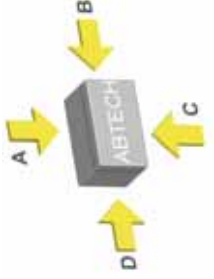
MSX 0.5 / SSX 0.5 Specifications	
Width	184mm
Length	274mm
Depth	140mm or 200mm
Material	Mild steel
	Stainless steel 316 (1.4404)
Weight	140mm deep
	5000g 200mm deep 6000g
IP Rating	66 or 67
Temperature	-40° to 80° C (standard neoprene gasket)
	-70° to 130° C (silicone gasket)
Certification	ATEX EEx e (Zone 1 & Zone 2) BS EN 60079-7
	ATEX EEx nA (Zone 2) BS EN 60079-15
	ATEX EEx nR (Zone 2) BS EN 60079-15
	CSA - Ex e (Class 1 Zone 1 & Zone 2)
Power Rating	FM - AEx e (Class 1 Zone 1 & Zone 2)
	GOST-R Ex e (Zone 1 & Zone 2)
	NEMA 4X (CSA, UL & FM) (class 1 division 2)
Power Rating	19.874W

Terminal Populations		
Maximum Number of Rows	Wago	
Weidmuller	Wago	
SAK 2.5	56	280-992
SAK 4	52	280-999
SAK 6	42	281-691
SAK 10 *	34	281-992
SAK 16 *	14	281-993
SAK 35 *	10	282-691 *
SAK 70 *	7	284-691 *
		283-691
		285-691
		280-998
		281-998
		264-120
Phoenix		264-220
UK 2.5 N	68	264-132 (2)
UK 3 N	68	264-134 (4)
UK 5 N	56	262-132 (2)
UK 10 N *	34	262-134 (4)
UK 16 N *	14	
UK 35 N *	11	

\* Care must be taken to ensure that the size of this enclosure can accommodate the cable bending radius.

Entry Matrix		
Entry Size	Side A-C	Side B-D
M16	7	12
M20	4	8
M25	2	4
M32	2	3
M40	1	2

Drilling Envelope	
Side A-C	119 x 75mm (4 x gp 140)
Side B-D	189 x 75mm (4 x gp 140)

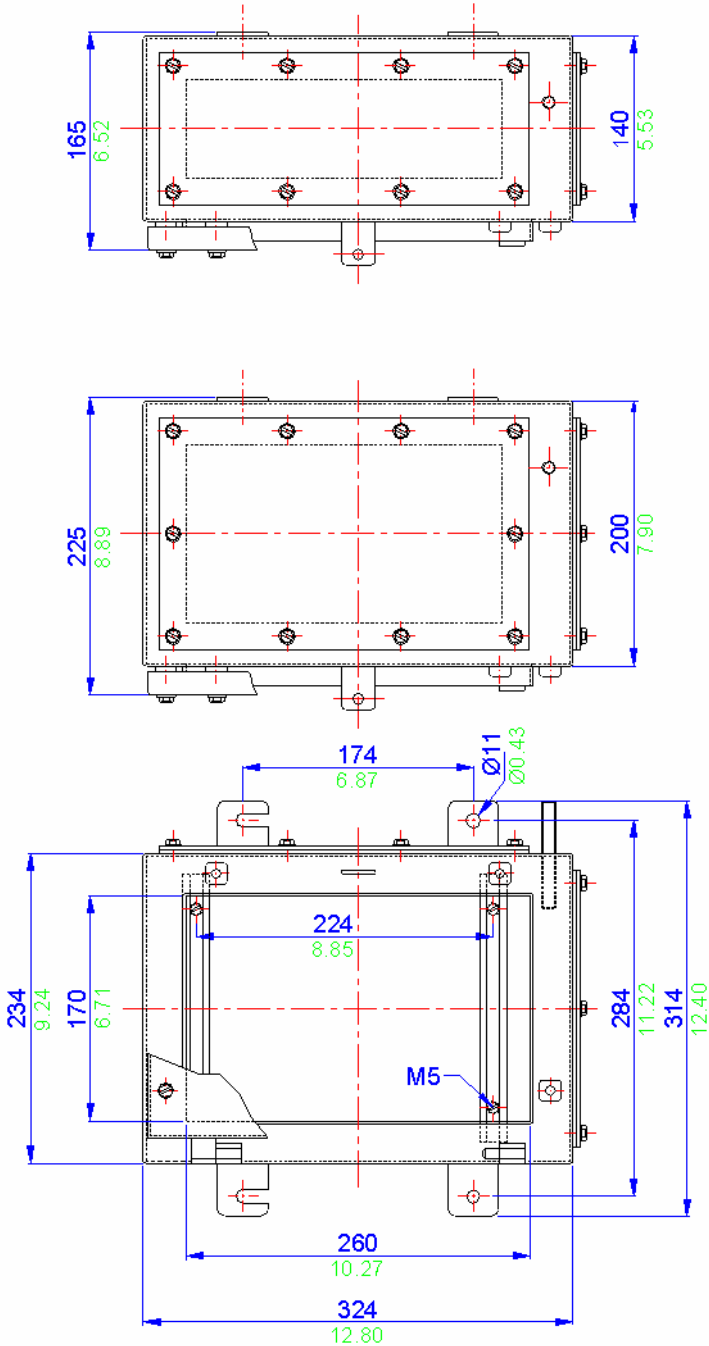


Technical	9
Specials	8
ZP Range	7
Fire Rated	6
High Voltage	5
ZAG Range	4
BPGA Range	3
BPG Range	2
SX Range	1

1

SX Range

MSX 1 / SSX 1 Drawing



All blue dimensions in mm, all green dimensions in decimal inches (drawing not to scale)

MSX 1 / SSX 1 Specifications	
Width	234mm
Length	324mm
Depth	140mm or 200mm
Material	Mild steel Stainless steel 316 (1.4404)
Weight	140mm deep 6300g 200mm deep 7200g
IP Rating	66 or 67
Temperature	-40° to 80° C (standard neoprene gasket) -70° to 130° C (silicone gasket)
Certification	ATEX EEx e (Zone 1 & Zone 2) BS EN 60079-7
	ATEX EEx nA (Zone 2) BS EN 60079-15
	ATEX EEx nR (Zone 2) BS EN 60079-15
	CSA - Ex e (Class 1 Zone 1 & Zone 2) FM - AEx e (Class 1 Zone 1 & Zone2) GOST-R Ex e (Zone 1 & Zone 2) NEMA 4X (CSA, UL & FM) (class 1 division 2)
Power Rating	29,206W

Terminal Populations		
Maximum Number of Rows	2	
Weidmuller	Wago	
SAK 2.5	72	280-992
SAK 4	66	280-999
SAK 6	54	281-691
SAK 10 *	44	281-992
SAK 16 *	18	281-993
SAK 35 *	14	282-691
SAK 70 *	10	284-691 *
		283-691 *
		285-691 *
		280-998
		281-998
		264-120
Phoenix		264-220
UK 2.5 N	86	264-132 (2)
UK 3 N	86	264-134 (4)
UK 5 N	72	262-132 (2)
UK 10 N *	44	262-134 (4)
UK 16 N *	18	
UK 35 N *	14	

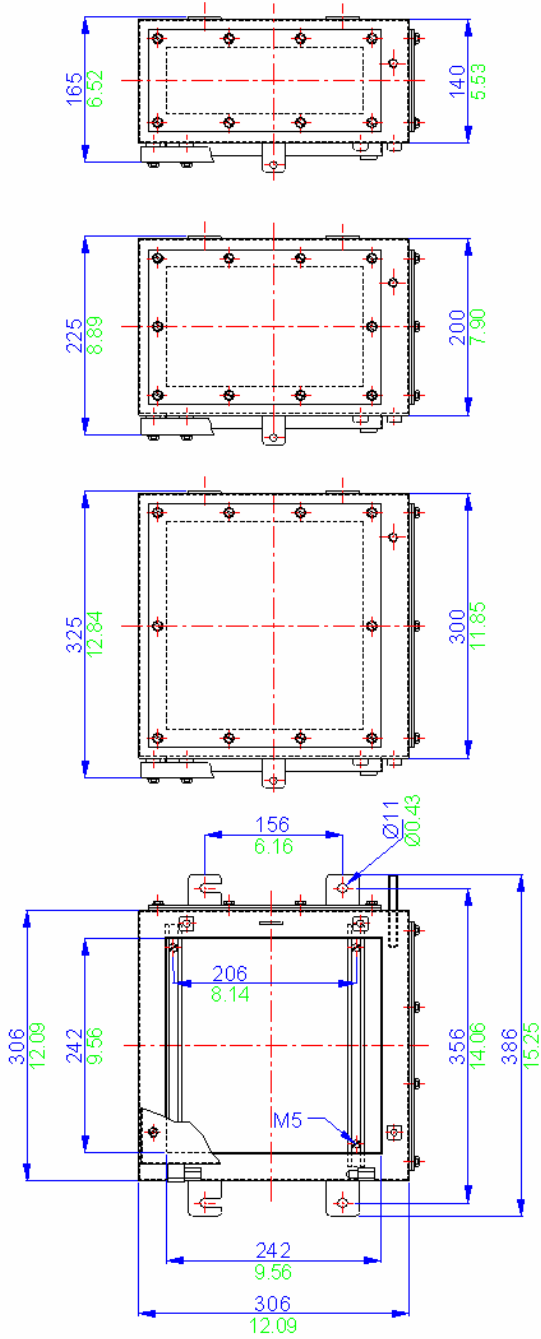
\* Care must be taken to ensure that the size of this enclosure can accommodate the cable bending radius.

Entry Matrix		
Entry Size	Side A-C	Side B-D
M16	10	14
M20	7	10
M25	4	6
M32	2	4
M40	2	3
Drilling Envelope		
Side A-C	169 x 75mm (4 x gp 140)	
Side B-D	239 x 75mm (4 x gp 140)	



Technical	9
Specials	8
ZP Range	7
Fire Rated	6
High Voltage	5
ZAG Range	4
BPGA Range	3
BPG Range	2
SX Range	1

MSX 1.5 / SSX 1.5 Drawing



All blue dimensions in mm, all green dimensions in decimal inches (drawing not to scale)

MSX 1.5 / SSX 1.5 Specifications	
Width	306mm
Length	306mm
Depth	140mm or 200mm
Material	Mild steel Stainless steel 316 (1.4404)
Weight	140mm deep 200mm deep 7300g 8800g
IP Rating	66 or 67
Temperature	-40° to 80° C (standard neoprene gasket) -70° to 130° C (silicone gasket)
Certification	ATEX EEEx e (Zone 1 & Zone 2) BS EN 60079-7 ATEX EEEx nA (Zone 2) BS EN 60079-15 ATEX EEEx nR (Zone 2) BS EN 60079-15 CSA - Ex e (Class 1 Zone 1 & Zone 2) FM - AEx e (Class 1 Zone 1 & Zone2) GOST-R Ex e (Zone 1 & Zone 2) NEMA 4X (CSA, UL & FM) (class 1 division 2)
Power Rating	32.284W

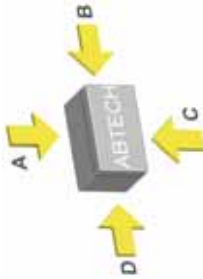
Terminal Populations		
Maximum Number of Rows	3	
Weidmuller	Wago	
SAK 2.5	99	280-992
SAK 4	93	280-999
SAK 6	75	281-691
SAK 10 *	60	281-992
SAK 16 *	34	281-993
SAK 35 *	24	282-691
SAK 70 *	20	284-691 *
		283-691 *
		285-691 *
		280-998
		281-998
		264-120
Phoenix		264-220
UK 2.5 N	120	264-132 (2)
UK 3 N	120	264-134 (4)
UK 5 N	99	262-132 (2)
UK 10 N *	60	262-134 (4)
UK 16 N *	34	
UK 35 N *	26	

\* Care must be taken to ensure that the size of this enclosure can accommodate the cable bending radius.

Entry Matrix		
Entry Size	Side A-C	Side B-D
M16	14	12
M20	10	10
M25	6	5
M32	4	3
M40	3	3

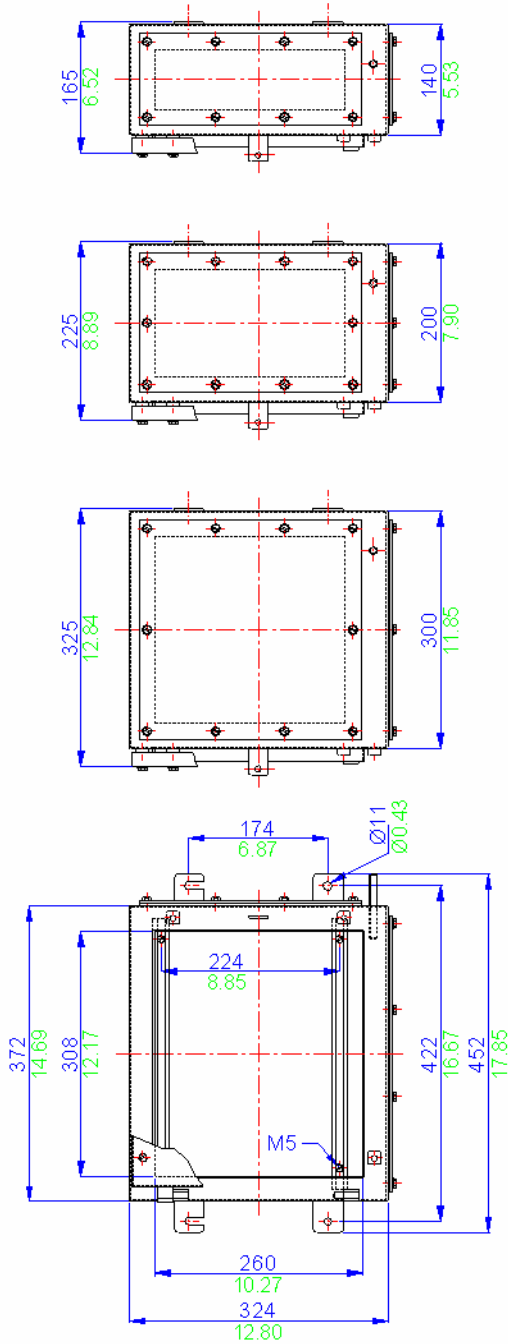
  

Drilling Envelope	
Side A-C	241 x 75mm (4 x gp 140)
Side B-D	221x 75mm (4 x gp 140)



Technical	9
Specials	8
ZP Range	7
Fire Rated	6
High Voltage	5
ZAG Range	4
BPGA Range	3
BPG Range	2
SX Range	1

MSX 2 / SSX 2 Drawing



All blue dimensions in mm, all green dimensions in decimal inches (drawing not to scale)

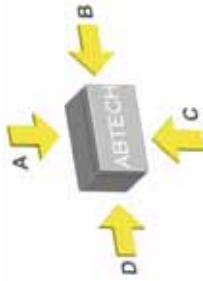
MSX 2 / SSX 2 Specifications	
Width	372mm
Length	324mm
Depth	140mm or 200mm
Material	Mild steel
	Stainless steel 316 (1,4404)
Weight	140mm deep
	9.5Kg
IP Rating	66 or 67
	-40° to 80° C (standard neoprene gasket)
Temperature	-70° to 130° C (silicone gasket)
	ATEX EEx e (Zone 1 & Zone 2) BS EN 60079-7
Certification	ATEX EEx nA (Zone 2) BS EN 60079-15
	ATEX EEx nR (Zone 2) BS EN 60079-15
Power Rating	CSA - Ex e (Class 1 Zone 1 & Zone 2)
	FM - AEx e (Class 1 Zone 1 & Zone 2)
	GOST-R Ex e (Zone 1 & Zone 2)
Power Rating	NEMA 4X (CSA, UL & FM) (class 1 division 2)
	36.500W

Terminal Populations		
Maximum Number of Rows	3	
Weidmuller	Wago	
	SAK 2.5	132
SAK 4	123	150
SAK 6	99	150
SAK 10	78	126
SAK 16	66	84
SAK 35	42	99
SAK 70	24	78
		44
		30
		150
		126
		132
Phoenix	264-220	
	UK 2.5 N	156
UK 3 N	156	18
UK 5 N	132	27
UK 10 N	78	18
UK 16 N	66	
UK 35 N	54	

\* Care must be taken to ensure that the size of this enclosure can accommodate the cable bending radius.

Entry Matrix		
Entry Size	Side A-C	Side B-D
M16	18	14
M20	14	10
M25	7	6
M32	5	4
M40	4	3

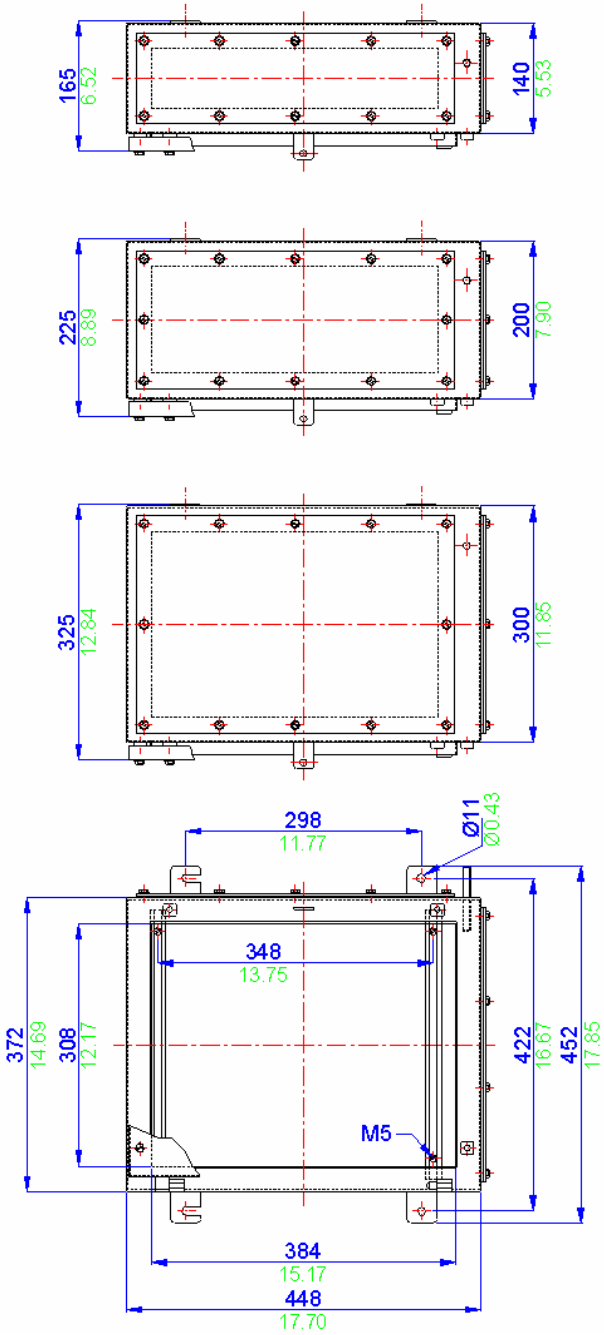
Drilling Envelope	
Side A-C	307 x 75mm (4 x gp 140)
Side B-D	239x 75mm (4 x gp 140)



SX 2 Photo

Technical	9
Specials	8
ZP Range	7
Fire Rated	6
High Voltage	5
ZAG Range	4
BPGA Range	3
BPG Range	2
SX Range	1

MSX 3 / SSX 3 Drawing



All blue dimensions in mm, all green dimensions in decimal inches (drawing not to scale)

MSX 3 / SSX 3 Specifications	
Width	372mm
Length	448mm
Depth	140mm or 200mm
Material	Mild steel Stainless steel 316 (1.4404)
Weight	140mm deep 11.3Kg 200mm deep 13.3Kg
IP Rating	66 or 67
Temperature	-40° to 80° C (standard neoprene gasket) -70° to 130° C (silicone gasket)
Certification	ATEX EEx e (Zone 1 & Zone 2) BS EN 60079-7 ATEX EEx nA (Zone 2) BS EN 60079-15 ATEX EEx nR (Zone 2) BS EN 60079-15 CSA - Ex e (Class 1 Zone 1 & Zone 2) FM - AEx e (Class 1 Zone 1 & Zone2) GOST-R Ex e (Zone 1 & Zone 2) NEMA 4X (CSA, UL & FM) (class 1 division 2)
Power Rating	42.289W

Terminal Populations		
Maximum Number of Rows	Wago	
3		
	Weidmuller	Wago
	SAK 2.5	168 280-992 189
	SAK 4	156 280-999 189
	SAK 6	126 281-691 162
	SAK 10 *	102 281-992 162
	SAK 16 *	84 281-993 108
	SAK 35 *	63 282-691 126
	SAK 70 *	45 284-691 * 99
		283-691 * 56
		285-691 * 38
		280-998 189
		281-998 162
		264-120 168
	Phoenix	
		264-220 99
	UK 2.5 N	201 264-132 (2) 36
	UK 3 N	201 264-134 (4) 24
	UK 5 N	168 262-132 (2) 36
	UK 10 N *	102 262-134 (4) 24
	UK 16 N *	84
	UK 35 N *	69

\* Care must be taken to ensure that the size of this enclosure can accommodate the cable bending radius.

Entry Matrix		
Entry Size	Side A-C	Side B-D
M16	18	20
M20	14	16
M25	7	9
M32	5	6
M40	4	5

Drilling Envelope	
Side A-C	307 x 75mm (4 x gp 140)
Side B-D	363 x 75mm (4 x gp 140)



SX 3 Photo

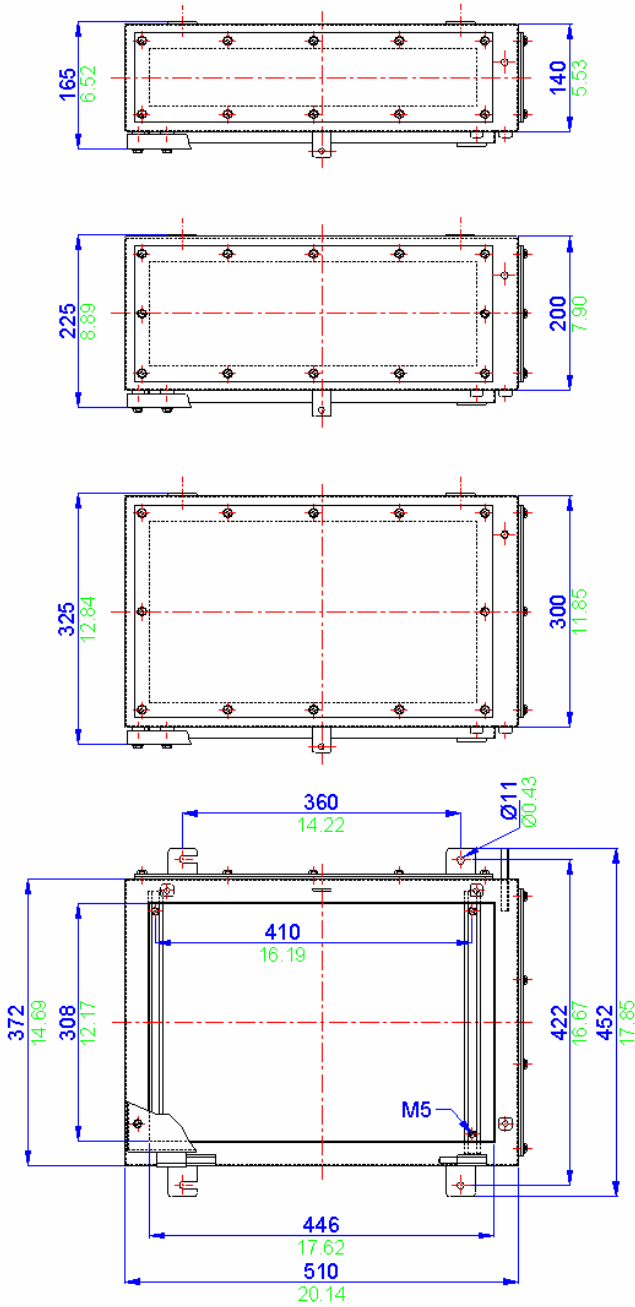


Technical	9
Specials	8
ZP Range	7
Fire Rated	6
High Voltage	5
ZAG Range	4
BPGA Range	3
BPG Range	2
SX Range	1

1

SX Range

MSX 4 / SSX 4 Drawing



All blue dimensions in mm, all green dimensions in decimal inches (drawing not to scale)

MSX 4 / SSX 4 Specifications		
Width	372mm	
Length	510mm	
Depth	140mm or 200mm	
Material	Mild steel Stainless steel 316 (1.4404)	
Weight	140mm deep 12.7Kg	200mm deep 14.8Kg
IP Rating	66 or 67	
Temperature	-40° to 80° C (standard neoprene gasket)	
	-70° to 130° C (silicone gasket)	
	ATEX EEx e (Zone 1 & Zone 2) BS EN 60079-7	
	ATEX EEx nA (Zone 2) BS EN 60079-15	
	ATEX EEx nR (Zone 2) BS EN 60079-15	
Certification	CSA - Ex e (Class 1 Zone 1 & Zone 2)	
	FM - AEx e (Class 1 Zone 1 & Zone 2)	
	GOST-R Ex e (Zone 1 & Zone 2)	
	NEMA 4X (CSA, UL & FM) (class 1 division 2)	
Power Rating	44.726W	

Terminal Populations		
Maximum Number of Rows	3	
Weidmuller	Wago	
SAK 2.5	198	280-992
SAK 4	183	280-999
SAK 6	150	281-691
SAK 10	120	281-992
SAK 16	99	281-993
SAK 35	75	282-691
SAK 70	54	284-691
		283-691
		285-691
		280-998
		281-998
		264-120
Phoenix		264-220
UK 2.5 N	237	264-132 (2)
UK 3 N	237	264-134 (4)
UK 5 N	198	262-132 (2)
UK 10 N	102	262-134 (4)
UK 16 N	99	
UK 35 N	81	

\* Care must be taken to ensure that the size of this enclosure can accommodate the cable bending radius.

Entry Matrix		
Entry Size	Side A-C	Side B-D
M16	18	24
M20	14	20
M25	7	10
M32	5	7
M40	4	6
Drilling Envelope		
Side A-C	307 x 75mm (4 x gp 140)	
Side B-D	425 x 75mm (4 x gp 140)	

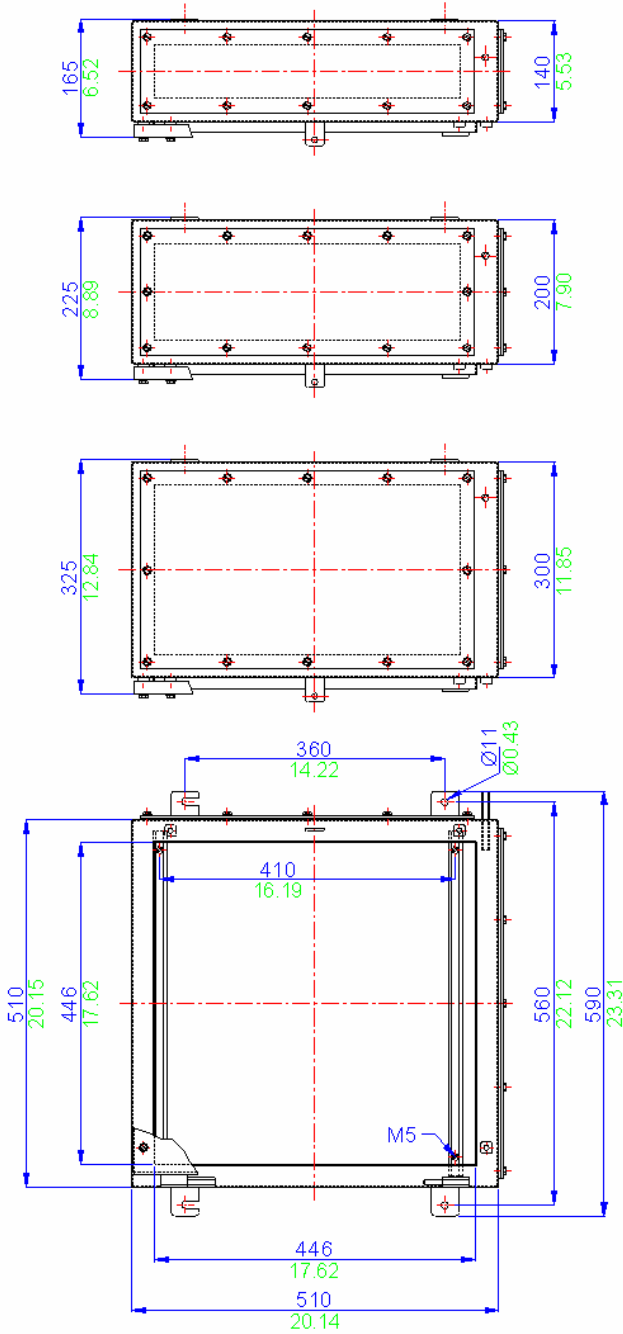


SX 4 Photo



Technical	9
Specials	8
ZP Range	7
Fire Rated	6
High Voltage	5
ZAG Range	4
BPGA Range	3
BPG Range	2
SX Range	1

MSX 5 / SSX 5 Drawing



All blue dimensions in mm, all green dimensions in decimal inches (drawing not to scale)

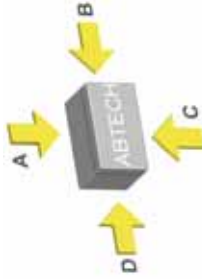
MSX 5 / SSX 5 Specifications	
Width	510mm
Length	510mm
Depth	140mm or 200mm
Material	Mild steel
	Stainless steel 316 (1,4404)
Weight	140mm deep 17.0Kg
	200mm deep 20.0Kg
IP Rating	66 or 67
Temperature	-40° to 80° C (standard neoprene gasket)
	-70° to 130° C (silicone gasket)
Certification	ATEX EEx e (Zone 1 & Zone 2) BS EN 60079-7
	ATEX EEx nA (Zone 2) BS EN 60079-15
	ATEX EEx nR (Zone 2) BS EN 60079-15
	CSA - Ex e (Class 1 Zone 1 & Zone 2)
Power Rating	FM - AEx e (Class 1 Zone 1 & Zone 2)
	GOST-R Ex e (Zone 1 & Zone 2)
	NEMA 4X (CSA, UL & FM) (class 1 division 2)
	50.328W

Terminal Populations		
Maximum Number of Rows	4	
Weidmuller	Wago	
SAK 2.5	264	280-992
SAK 4	244	280-999
SAK 6	200	281-691
SAK 10	160	281-992
SAK 16	132	281-993
SAK 35	100	282-691
SAK 70	72	284-691
		283-691
		285-691
		280-998
		281-998
		264-120
		264-220
Phoenix		
UK 2.5 N	316	264-132 (2)
UK 3 N	316	264-134 (4)
UK 5 N	264	262-132 (2)
UK 10 N	160	262-134 (4)
UK 16 N	132	
UK 35 N	108	

\* Care must be taken to ensure that the size of this enclosure can accommodate the cable bending radius.

Entry Matrix		
Entry Size	Side A-C	Side B-D
M16	26	24
M20	20	20
M25	10	10
M32	7	7
M40	6	6

Drilling Envelope	
Side A-C	445 x 75mm (4 x gp 140)
Side B-D	425 x 75mm (4 x gp 140)

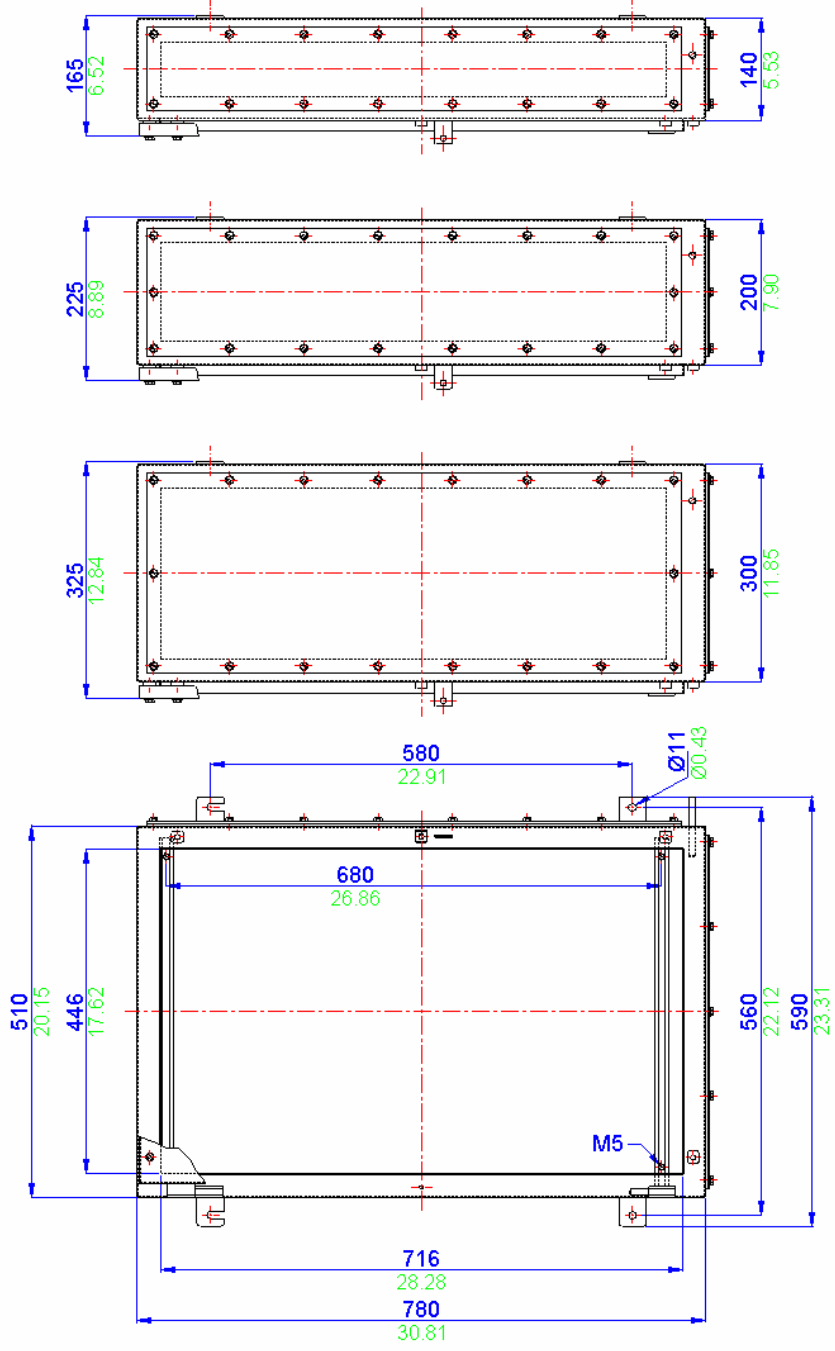


SX 5 Photo



Technical	9
Specials	8
ZP Range	7
Fire Rated	6
High Voltage	5
ZAG Range	4
BPGA Range	3
BPG Range	2
SX Range	1

MSX 6 / SSX 6 Drawing



All blue dimensions in mm, all green dimensions in decimal inches (drawing not to scale)

MSX 6 / SSX 6 Specifications		
Width	510mm	
Length	780mm	
Depth	140mm or 200mm or 300mm	
Material	Mild steel	
	Stainless steel 316 (1,4404)	
Weight	140mm	300mm
	24.0Kg	32.0Kg
IP Rating	66 or 67	
Temperature	-40° to 80° C (standard neoprene gasket)	
	-70° to 130° C (silicone gasket)	
Certification	ATEX EEx e (Zone 1 & Zone 2) BS EN 60079-7	
	ATEX EEx nA (Zone 2) BS EN 60079-15	
	ATEX EEx nR (Zone 2) BS EN 60079-15	
	CSA - Ex e (Class 1 Zone 1 & Zone 2)	
Power Rating	FM - AEx e (Class 1 Zone 1 & Zone 2)	
	GOST-R Ex e (Zone 1 & Zone 2)	
	NEMA 4X (CSA, UL & FM) (class 1 division 2)	
Power Rating	57.383kW	

Terminal Populations		
Maximum Number of Rows	4	
Weidmuller	Wago	
	SAK 2.5	496
SAK 4	496	
SAK 6	424	
SAK 10	424	
SAK 16	318	
SAK 35	328	
SAK 70	264	
	165	
	114	
	496	
	424	
	440	
Phoenix	264-220	
	UK 2.5 N	92
	UK 3 N	64
	UK 5 N	92
	UK 10 N	64
	UK 16 N	
UK 35 N	176	

\* Care must be taken to ensure that the size of this enclosure can accommodate the cable bending radius.

Entry Matrix		
Entry Size	Side A-C	Side B-D
M16	26	40
M20	20	34
M25	11	18
M32	7	11
M40	6	9

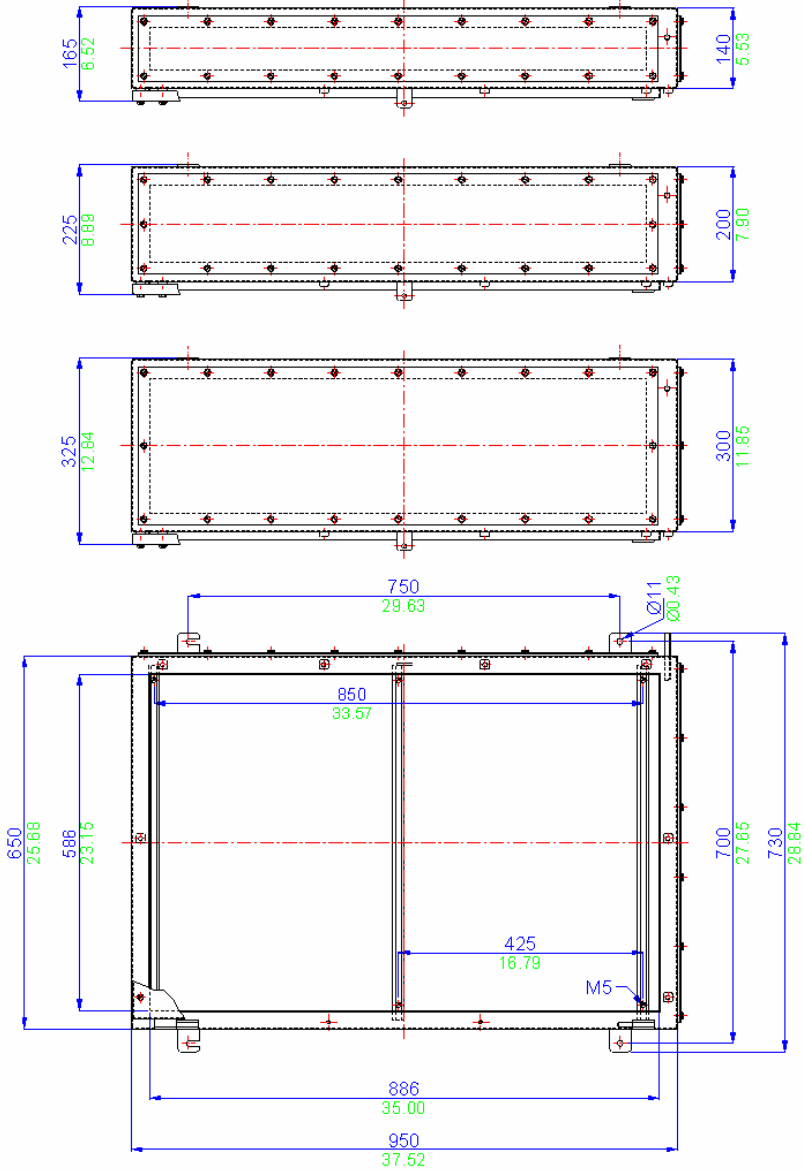
Drilling Envelope	
Side A-C	445 x 75mm (4 x gp 140)
Side B-D	695 x 75mm (4 x gp 140)



Technical	9
Specials	8
ZP Range	7
Fire Rated	6
High Voltage	5
ZAG Range	4
BPGA Range	3
BPG Range	2
SX Range	1

1  
SX Range

MSX 7 / SSX 7 Drawing



All blue dimensions in mm, all green dimensions in decimal inches (drawing not to scale)

MSX 7 / SSX 7 Specifications		
Width	650mm	
Length	950mm	
Depth	140mm or 200mm or 300mm	
Material	Mild steel	
	Stainless steel 316 (1.4404)	
Weight	140mm 35.0Kg	200mm 39.0Kg
	300mm 52.0Kg	
IP Rating	66 or 67	
Temperature	-40° to 80° C (standard neoprene gasket)	
	-70° to 130° C (silicone gasket)	
Certification	ATEX EEx e (Zone 1 & Zone 2) BS EN 60079-7	
	ATEX EEx nA (Zone 2) BS EN 60079-15	
	ATEX EEx nR (Zone 2) BS EN 60079-15	
	CSA - Ex e (Class 1 Zone 1 & Zone 2)	
	FM - AEx e (Class 1 Zone 1 & Zone 2)	
Power Rating	GOST-R Ex e (Zone 1 & Zone 2)	
	NEMA 4X (CSA, UL & FM) (class 1 division 2)	
	68.000W	

Terminal Populations		
Maximum Number of Rows	5	
Weidmuller	Wago	
	SAK 2.5	280-992
	SAK 4	280-999
	SAK 6	281-691
	SAK 10	281-992
	SAK 16	281-993
	SAK 35	282-691
	SAK 70	284-691
		283-691
		285-691
		280-998
		281-998
		264-120
Phoenix	264-220	
	UK 2.5 N	264-132 (2)
	UK 3 N	264-134 (4)
	UK 5 N	262-132 (2)
	UK 10 N	262-134 (4)
	UK 16 N	
	UK 35 N	280

\* Care must be taken to ensure that the size of this enclosure can accommodate the cable bending radius.

Entry Matrix		
Entry Size	Side A-C	Side B-D
M16	34	81
M20	28	60
M25	13	39
M32	10	28
M40	8	16

**Drilling Envelope**

Side A-C	585 x 75mm (4 x gp 140)
Side B-D	865 x 75mm (4 x gp 140)



**SX 7 Photo**



Technical	9
Specials	8
ZP Range	7
Fire Rated	6
High Voltage	5
ZAG Range	4
BPGA Range	3
BPG Range	2
SX Range	1





1

SX Range

